

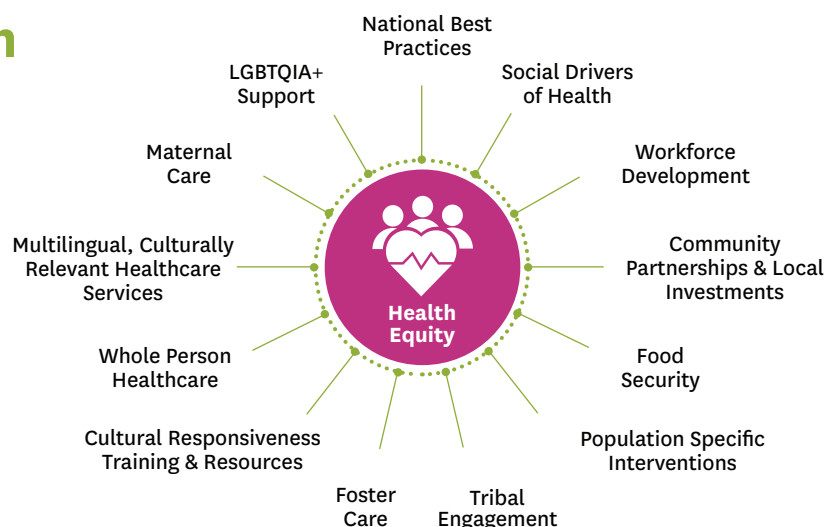
Driving Health Equity Across Washington

Washington can achieve health equity. It will happen when every person, regardless of their socioeconomic status, has the chance to reach their full health potential. Coordinated Care knows the needs of Apple Health enrollees are as diverse as the population itself. That's why we've created innovative programs, proactive solutions and support systems that break down barriers to care, improve access and cultivate more equitable outcomes.



A Multipronged Approach

Coordinated Care has designed an innovative and multipronged approach to improve health equity. Our model is based on meaningful engagement with our members, providers and community organizations to consider the whole-person and their unique social and healthcare needs. Together with our partners, we launch solutions that increase access to quality care and reduce health disparities.



National Best Practices, Locally Tailored

Backed by the country's most sophisticated Medicaid Managed Care Organization, Coordinated Care combines national, award-winning best practices with local expertise to meet the diverse needs of Apple Health enrollees.

Dedicated Health Equity Team

Coordinated Care has a dedicated Chief Health Equity Officer, a cross-department health equity team, and has remained committed to hiring a diverse workforce – all of which ensure the diverse needs of our members and providers are understood and addressed.

Focus on Addressing Social Drivers

Coordinated Care works to directly address social drivers of health – such as education, food security, transportation and housing – to foster more equitable outcomes for all members.

Since 2020, Coordinated Care invested over \$5.4 million with nearly 150 community organizations across Washington to support initiatives addressing health inequities and social drivers of health.

Our Commitment To Improve Health Equity Has Earned Accolades From:



Washington State
Department of Social
& Health Services

Practice Transformation
Award



National Committee for Quality Assurance
(NCQA) Health Equity Accreditation



Scan here to
learn more.

Expertise Serving Washington's Apple Health Enrollees

With expertise serving Washington's Apple Health enrollees, Coordinated Care brings unmatched knowledge of the state's diverse populations. We couple these insights with a data-driven health equity model and local partnerships. The result? Interventions tailored to make an impact.



Foster Care Population:

As the only plan partnering with the State to serve Washington's foster care population, Coordinated Care's Apple Health Core Connections program drives holistic, trauma-informed care for thousands of children, youth and young adults.



Parents & Babies:

Coordinated Care was the first Apple Health plan to offer 24/7 virtual doula services as an added benefit – connecting new and expecting parents with maternal and pediatric experts, doulas, lactation consultants and registered nurses.



Tribal Communities:

We work closely with our tribal partners across the state to develop our culturally humble approach to support the needs of American Indians, Alaska Natives, and Indian health care providers.



LGBTQIA+ Members:

Coordinated Care was the first Apple Health plan in Washington to provide dedicated resources, programs and services specific to the needs of our LGBTQIA+ members.

Dialed into Our Communities: Local Partnerships

Coordinated Care is committed to reinvesting in organizations across Washington who are trusted messengers and know their local neighborhoods best. Together with our partners, we launch programs tailored to the communities we serve that influence health and wellness beyond a visit to the doctor.



What's Ahead

As the State continues to serve Washington's unique populations, Coordinated Care will be there as a trusted partner every step of the way. Together, we'll work to improve health equity and wellbeing for all – transforming the health of the community, one person at a time.